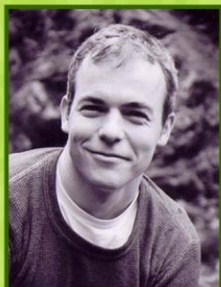


CHHA BC Parents' Branch presents our annual
spring workshop
Saturday, May 14, 2011

"Don't miss this heart-warming speaker!"

**featured
speaker:**



**Doctor
Jonathan
Dawrant**

Jonathan Dawrant is a Calgary based Pediatrician and Endocrinologist with moderate to severe hearing impairment and wears two behind the ear hearing aids. He grew up in Edmonton, Alberta in a family of four children. Jonathan attended regular schools where he learned the joys of always sitting at the front of the class and wearing oversized FM systems that made him look like an air traffic controller.

In recent years, Jonathan has been mentoring hard of hearing children and medical students. At Spring Workshop, he hopes to share his firsthand experiences of school (elementary through medical school) and growing up hard of hearing. This will be an interactive, free flowing session where Jonathan will discuss self esteem, friendships, school challenges and extra-curricular interests.

schedule: 10:30am - registration, coffee
11:00 - Jonathan Dawrant speaks
12:15pm - lunch
1-2:00pm - Questions / Discussion

location: BC Family Hearing Resource Centre
15220 92 Avenue, Surrey, BC
Sorry, no childcare available.

registration: Pre-registration required.
cost: \$25 /person, \$35 /couple, incl. lunch
collected at the door (cash or cheque only)
Register with Willetta:
info@CHHAparents.bc.ca or 604-819-5312

www.CHHAparents.bc.ca

April 2011



Canadian
Hard of
Hearing
Association
B.C.
Parents'
Branch

Mailing Address:

c/o Willetta Les, Editor
10150 Gillanders Rd.
Chilliwack, BC V2P 6H4

Phone: 604-819-5312
Fax: 604-794-3960
info@CHHAparents.bc.ca
www.CHHAparents.bc.ca

Membership

\$30 annual fee includes
subscription to
Listen/Écouté magazine
and *The Loop* newsletter

In this issue...

- Spring Workshop
- Hearing Aids & Cell Phones
- The Itinerant Teacher Program

... and much more!

President's Message ...

Happy Spring Friends!

As the season changes, I have to remember that like the seasons, our kids change in various ways. Some of these changes are subtle, others are more visible. For example, as parents, we try and guide our kids through changes such as physical development, maturity, social interaction, being of good character, self advocacy, benefits of wearing FM's and hearing aids, responsibility etc. We are so diligent in our efforts that sometimes we forget to realize that as the kids get older we have to back off as a parent managing everything for them and let them take more responsibility.

Just recently I had to check myself up for this with our son. He is 17 years old now and doing an Automotive Service Technician apprenticeship through school. Since the course is in a different school district I went ahead and organized the transfer of the FM from the previous district. He said he did not want to use an FM as it did not help, but I insisted he try it. I missed the fact that he did not want to stand out in a class of young men he did not know. He was advocating for himself. Fortunately his instructor had a deep booming voice and was well spoken. My son is doing well in the course so far and I have all the confidence now that he will be successful.

The next phase of this course will be at the local college and the itinerant teacher was trying to get servicing in place for my son. I discussed it with him first this time. He decided he did not need any special adaptations because of his hearing loss and both the itinerant teacher and I had to respect his decision.

I remember years ago at one of our CHHA Parent Conferences the question was put forward to one of the hard of hearing teens, "What advice would you give to parents of hard of hearing kids?" This young man stood up and said "Parents, remember that your hard of hearing kids are kids first. Allow your kids to try different activities such as football, hockey or stand up for themselves, etc. Do not over protect them! Parents have taught us a lot of things but as we get older parents need to learn to let go!" This has always stayed in my memory yet I still need reminders.

As parents of hard of hearing kids, you learn from day one to advocate for your children, from the social to school environment to hearing appointments etc.



As they get older, we teach them to take on more responsibility for their hearing aids and to be self advocates. Now we have to let them go! Let them practice the skills they have been taught all these years. You might be surprised at just how well they succeed!

Speaking of success, we're excited to have Dr. Jonathon Dawrant as our guest speaker at our CHHA Spring Workshop being held Saturday May 14 at the BC Family Hearing Resource Center. Born with a hearing impairment, Jonathon will share his story on self esteem, friendships, school challenges and outside interests with us all in an interactive session. **Don't miss it! Register now!**

Look forward to seeing you soon!
Teresa Lonn
President

It was unfortunate that the annual Games Night scheduled in February had to be cancelled last minute due to poor weather conditions in the area. Our apologies to those of you that showed up to locked doors. In future, we will have the website updated with current notices.

Comments? Ideas? Want to get involved?

We'd love hear from you!
info@chhaparents.bc.ca

Spring Workshop 2010 is available on video.

Includes all presentations:
Pacific Assistance Dog Society,
WIDHH,
Dan Panccioretti ,
and the teen/young adult panel.

Please contact Willetta
info@CHHAParents.bc.ca or 1-604-819-5312
for a DVD copy.

Hearing Aids & Cell Phones

Choosing and Using a Cell Phone with Your Hearing Aid or Cochlear Implant

Federal Communications Commission (FCC) regulations require hearing aid-compatible digital wireless telephones. Here are the answers to the most frequently asked questions about cell phones and the FCC regulations.

If you are a hearing aid or cochlear implant user, the likelihood of finding a relatively interference free cell phone that will work with your hearing devices is increasing because of improvements in cell phones and hearing instruments. We expect to see more phones in the 3G network that are compatible with hearing aids and cochlear implants.

However, because hearing loss and hearing instruments are highly individualized, it is still advisable to try out cell phones in the store before making a purchase and again at home and work within the provider's return period.

Q. How do I know if my hearing aid is likely to work with a cell phone?

A. Ask your hearing health care provider if your hearing aid has shielding for cell phone RF emissions or if the circuitry design has good immunity to interference.

Hearing aids have ratings similar to cell phones although hearing aids may not be labeled. Most new hearing aids have at least an "M 2" immunity level. Your hearing health care professional may need to contact the manufacturer of your hearing aid to determine its immunity rating.

Q. Are there phones I can use with my hearing aid on the telecoil setting?

A. There are phones on the market that will work with your telecoil. The FCC introduced legislation in 2006 and 2010 that require that cell phones must offer at least two models with a "T 3" rating per digital air interface. Manufacturers must also ensure that one third of their handsets per air interface must meet at least a "T 3" rating. They are labeled on the box with ratings of "T 3" or "T 4."

Attaching accessories such as neckloops is another way to use a cell phone with your telecoil. Your hearing healthcare professional can assist you in choosing an appropriate accessory.



Q. What does "T" mean?

A. "T" refers to using the hearing aid set on telecoil. The higher the "T" number the more likely you will be able to use the phone with your hearing aid set on telecoil. Reduced feedback and reduced background noise are additional benefits of using a hearing aid set on telecoil during phone use. Once cell phones are rated for telecoil use, to determine the likelihood of successful cell phone use with your hearing aid add the "T" rating number of the cell phone to the "T" rating number of your hearing aid.

If you prefer to use your telecoil with your cell phone, be aware that some cell phones will need the telecoil setting (sometimes referred to as the "hearing aid mode") to be activated before it will be effective. Be sure to ask the sales person to activate the telecoil before testing the phone.



Since a cell phone's RF emissions can change depending on your location, your listening experience outside the store where you tried your phone may be different. You should test the cell phone in a number of different environments and locations to be sure that it works effectively for you. Please remember that the quality of reception can vary at times.

It's best to try several phones before making your purchase to find the best match with your hearing aid. Discuss your needs with your service provider before signing up for any cell phone or service.

For more help, check out this video online: "Hearing Aid Compatibility Videos: Choosing a Cell Phone That Works For You"

www.hearingloss.org/advocacy/telecomm.asp#aidvideos

Source:

The Nation's Voice for People with Hearing Loss
Hearing Loss Association of America
http://www.hearingloss.org/advocacy/pdfs/QAonHAC_cellphones.pdf

The Itinerent Teacher Program

Source: website of School District 28 – Maple Ridge
<http://www.sd28.bc.ca/district/departments/studentse rvices/manual/3-1-8.pdf> Please note that your District may have slightly different guidelines.

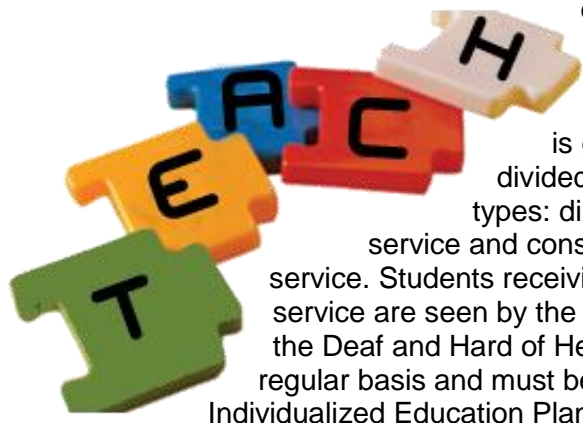
District Resource Teacher of the Deaf and Hard of Hearing

Services of the Resource Teacher of the Deaf and Hard of Hearing (T.D.H.H.) in School District #28 are provided on a district-based itinerant basis. Students receiving the support of these services are enrolled in the classroom setting, and may include:

- Students with a mild to profound sensorineural hearing loss, who communicate by using speech, listening and speech-reading and/or sign language
- Students with a history of conductive hearing loss and/or chronic middle ear infections
- Students with a unilateral hearing loss
- Students with a cochlear implant
- Students with a diagnosis of central auditory processing dysfunction are not traditionally served by Teachers of the Deaf and Hard of Hearing unless there is an additional diagnosis of peripheral hearing loss.

Description of Services Available

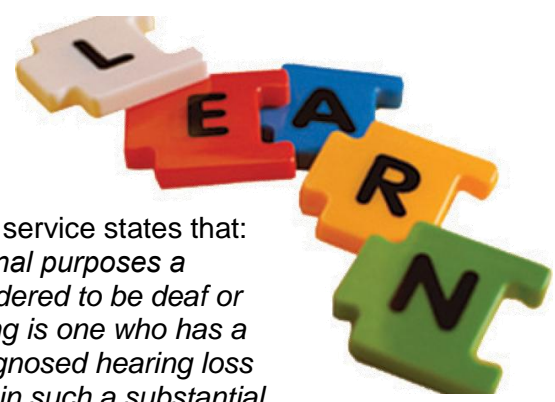
The amount and type of support provided to each deaf or hard of hearing student shall be determined by his or her needs and the amount of T.D.H.H. caseload time available, with the goal of fostering successful academic progress and social integration for that student. Factors affecting the type and amount of service provided may include the student's degree of hearing loss, their educational and/or social functioning as a result of their hearing impairment, if they have been newly diagnosed or are new to the District, whether they need assistance with self-advocacy or auditory management skills, etc.



Service delivery is generally divided into two types: direct service and consultative service. Students receiving direct service are seen by the Teacher of the Deaf and Hard of Hearing on a regular basis and must be on an Individualized Education Plan

(I.E.P.), while those receiving consultative service are seen on an infrequent basis and are not required to have an I.E.P. regarding their audiological needs. Students seen on a consultative basis may require support in similar areas as students on the direct caseload, but not on a regular and ongoing basis.

The Ministry of Education definition, for funding purposes, of students who receive direct service states that:



“For educational purposes a student considered to be deaf or hard of hearing is one who has a medically diagnosed hearing loss which results in such a substantial educational difficulty that he/she requires direct services on a regular, frequent and ongoing basis by a qualified Teacher of the Deaf and Hard of Hearing.”

The following conditions must be met:

- A medical diagnosis of hearing loss has been made
- A current IEP must be in place
- The student must be receiving special education services that are directly related to the student's hearing loss on a regular, frequent and on-going basis from a qualified Teacher of the Deaf and Hard of Hearing. The special education service(s) must be in addition to any services provided under formula funding based on total student enrolment (e.g. learning assistance or counselling). ...

(from: Special Education Services: A Manual of Policies, Procedures and Guidelines,. Students Who Are Deaf or Hard of Hearing, Section E page 51)

Service to students on the direct service caseload would include:

- Assessment/evaluation of a student's present level of functioning
- An Individualized Education Plan (I.E.P.)
- Direct instruction, either within the classroom, in a small group or on an individual basis, focusing on academic or social/emotional areas of need, the use and care of assistive listening devices, speech and/or language development,
-

- Work experience consultation and support (as appropriate)
- Opportunities to meet and/or communicate with other deaf and hard of hearing students

The Itinerant Teacher of the Deaf and Hard of Hearing may work in collaboration with professionals in the medical and educational fields as well as with parents. This collaboration may include:

- Interpretation and educational implications of audiological reports
- Support surrounding the procurement, care, use and performance of assistive listening devices
- Participation in meetings as a member of the student's educational team
- Provision of workshops regarding the implications of hearing loss and the needs of deaf or hard of hearing individuals
- Classroom workshops about hearing and deafness
- Liaison between the school and home to facilitate effective ongoing communication
- Contact with parents or guardians as necessary regarding areas of concern relating to the student's social, emotional, academic, vocational or audiological needs
- Assistance in arranging medical or audiological referrals and/or appointments

Service Access

Referral to the Deaf and Hard of Hearing Program may be made through the School-Based Team and may be initiated by parents or school staff using the Support Services Referral Form.

Personnel Qualifications

- Hold a teaching certificate and a Master's Degree or Diploma in Education of the Deaf and Hard of Hearing
- Be a member or eligible for membership in the Canadian Association of Educators for the Deaf and Hard of Hearing (CAEDHH)

Check out this very informative YouTube video clip about the use of FM systems in the classroom. Share with your child's teacher(s).

<http://www.youtube.com/watch?v=ln8NHZVfJkQ>

UPCOMING EVENTS!

CHHA BC Parents' Spring Workshop

Featured Speaker Dr. Jonathan Dawrant

Saturday, May 14 10:30-2:00

Location: BC Family Hearing Resource Centre, Surrey, BC

See cover of this newsletter for more details.

info@CHHAparents.bc.ca

CHHA Vancouver: "New Research Findings and Hearing aid Use."

Presentation by Dr. Lorraine Jenstad, UBC Audiologist,

Thursday, May 19, 7-9 pm

Location: Multipurpose Room, Children's Hearing and Speech Centre 3575 Kaslo Street, Vancouver

chhavancouver@hotmail.com

Annual Cochlear Implant

Pack your own lunches, refreshments and lawn chairs.

Kelowna – Saturday, June 4, 2011,
1:00 p.m. to 5:00 p.m.

Location: Mission Creek Park.

Surrey – Saturday, July 9, 2011,
11:00 a.m. to 3:30 p.m.

Location: Redwood Park

chha-bc2@telus.net

BC Hands & Voices Spring Picnic

Rain or shine! We have rented a hall this year in case it rains, but there is a great outdoor area if the weather is good. Join us for a potluck lunch, games & activities for the kids, and a chance to connect with other parents of kids who are deaf or hard of hearing. *Travel grant available to assist with travel costs.* Hope to see you there!

Saturday May 28th, 11am-2pm

Location: Clayton Hall, Surrey

www.bchandsandvoices.com

Audiology Work Experience

As part of her Grade 11 work experience program at school, Jodene Les worked with Chilliwack Audiologist Bonny Wood for a few days.

Bonny Wood is an Audiologist and Hearing Instrument Practitioner for the Fraser Health Authority. Jodene's older brother Curtis Les is hard of hearing, so Jodene grew up with a HoH sibling. Bonny was Curtis' Audiologist. Jodene knew Curtis visited Bonny, but didn't know exactly what happened at those appointments.



Jodene had the opportunity to observe and work alongside Bonny, learning what Bonny's job entails. She viewed Bonny conducting hearing tests for all different ages of kids/teens; Bonny taught her how to record some of the findings. Bonny demonstrated an ear mold fitting and hearing aid programming. Jodene learned a little about how Bonny can fine-tune the aids to optimize hearing for the wearer. Jodene also tagged along to the hospital to see some newborn hearing screening tests.

Jodene found that Bonny's job is very interesting; the duties are varied and advancements in technology are exciting for those working in this field.

Hands On
SUMMER CAMP

*Integrated Educational & Recreational
Programs for Deaf, Hard of Hearing
and Hearing Children*

Looking for a summer camp for your hard of hearing child? Check out "Hands On Summer Camp" in Victoria, BC!

Their camps are one week in duration and integrate hearing, deaf and hard of hearing children ages 5–12. One sport is taught in each camp by professionals in their fields of expertise. Hearing children can get an exciting glimpse into a wonderful language, while deaf and hard of hearing children experience a rare opportunity to participate with ease. They emphasize learning and fun through sign language studies, sports, arts and crafts and other interesting activities. Camps run July and August.

More information and registration available on their website:

www.handsonsummercamp.com



Laughter

is the
BEST
medicine.

Last night at bedtime we were talking about different people we need to remember in our prayers, and our son mentioned a girl about whom they had apparently made an announcement at school. A girl in kindergarten who was "born death," he said. Near as we could figure, he meant someone in kindergarten had had a stillborn sibling. No, it was the kindergartner herself who was "born death" and she was "still death." We were so puzzled! Then he explained, "But to help her not be death, they put eggplants in her ears."



Curious to know what people who are hard of hearing have to go through with their every day communication? Here's a passage that may give you just a bit of insight.

Room Service: Morny. Rune-sore-bees.

Hotel Guest: Oh, sorry. I thought I dialed Room Service.

RS: Rye, rune-sore-bees. Morny. Djewish to odor sunteen?

HG: Uh... yes. I'd like some bacon and eggs.

RS: Ow July then?

HG: What?

RS: Aches. Ow July then? Pry, boy, pooch...?

HG: Oh, the eggs! How do I like them? Sorry. Scrambled please.

RS: Ow July thee baycome? Crease?

HG: Crisp will be fine.

RS: Okay. An Santos?

HG: What?

RS: Santos. July Santos?

HG: Ugh. I don't know... I don't think so.

RS: No. Judo one toes?

HG: Look, I feel really bad about this, but I don't know what "judo one toes" means. I'm sorry.

RS: Toes! Toes! Why djew Don Juan toes? Ow bow cenglish mopping we bother?

HG: English muffin! I've got it! You were saying toast! Fine. An English muffin will be fine.

RS: We bother?

HG: No. Just put the bother on the side.

RS: Wad?

HG: I'm sorry. I meant butter. Butter on the side.

RS: Copy?

HG: I feel terrible about this but...

RS: Copy. Copy, tea, mill...

HG: Coffee! Yes, coffee please. And that's all.

RS: One Minnie. Ass rune torino fee, strangle aches, crease baycome, tossy cenglish mopping we bother honey sigh, and copy. Rye?

HG: Whatever you say.

RS: Okay. Tendjewberrymud.

HG: You're welcome.

2010-11 Board Members

President	Teresa Lonn
Vice President	Leila Lolua
Secretary	Nicole Grazier
Treasurer	Lynne Page
Directors at Large	Simone Felker
	Lisa Woogman
	Cathy Higginson

Parent Support	Cathy Luther
	Tanya Grange

Webmaster	Steve Kazemir
Administrator	Willetta Les

We operate as a team: working together to bring support parents of children who are hard of hearing.

We welcome you to attend our next meeting... you won't be asked to commit to a lot of work, we promise! We meet in Surrey 4-5 times per year.

Please contact Willetta at info@chhaparents.bc.ca for info.

MISSION STATEMENT

We are a parent group who are passionate about connecting & supporting families throughout BC who have school-aged children living with hearing loss. Through fun family activities our children develop sustaining friendships as they grow into young adults. We educate and support parents through our newsletters, workshops and other events. As a parent group, we understand the power of meeting with each other.

Email is our most cost-effective way to give you important information on a regular basis...

If you are not receiving our email updates, please send your address to info@CHHApents.bc.ca. We won't fill your inbox - we send out a few emails between newsletter publications - don't miss out!

If your address changes, please let us know to avoid returned mail.

We love to hear from our families. If you have any suggestions regarding events, newsletters, issues you need help with, etc., please contact us! We welcome submissions for our newsletter.

info@chhaparents.bc.ca | 1-604-819-5312

Membership is open to any individual or Organization. Annual membership fee is \$30. Membership in the Canadian Hard of Hearing Association entitles you to vote on any CHHA matter, and subscriptions to *LISTEN* magazine, CHHA-BC's newsletter *The Loop* and the Parents' Branch newsletter.



_____ Parent(s) Professional Other

NAME(s)

MAILING ADDRESS

_____	_____
<small>PHONE</small>	<small>EMAIL</small>

H of H Child(ren): _____

_____	_____
<small>Name</small>	<small>Birthdate</small>
_____	_____
<small>Name</small>	<small>Birthdate</small>

New Membership (\$30 annually)

Renewal (\$30 annually)

Donation \$ _____

Total Enclosed: \$ _____

Please consider donating to CHHA BC Parents' Branch via United Way – our charity number is 86215 7302 RR0001. We sincerely thank the Province of B.C. for their funding support for our Newsletter publication and Family Weekend.

Thank you! Your support benefits hard-of-hearing children in BC...

Payable to: CHHA B.C. Parents' Branch – c/o 10150 Gillanders Road; Chilliwack, BC V2P 6H4 - Phone: 604-819-5312